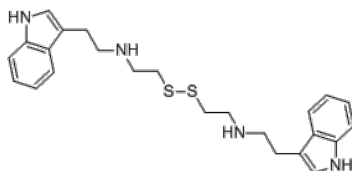


**Product Name** : G6PD activator AG1  
**Cat. No.** : PC-35706  
**CAS No.** : 421581-52-4  
**Batch No.** : PC-3570601  
**Chemical Name** : 2,2'-disulfanediyldis(N-(2-(1H-indol-3-yl)ethyl)ethan-1-amine)

### PHYSICAL AND CHEMICAL PROPERTIES

**Molecular Weight** : 438.652  
**Molecular Formula** : C<sub>24</sub>H<sub>30</sub>N<sub>4</sub>S<sub>2</sub>  
**Storage** : Powder -20°C 12 Months  
4°C 6 Months  
In solvent -80°C 6 Months  
-20°C 6 Months

**Chemical Structure** :



### ANALYTICAL DATA

**Appearance** : Solid powder  
**<sup>1</sup>H NMR Spectrum** : Consistent with  
**HPLC** : Consistent with  
**NP** : Consistent with  
**Purity (HPLC and/or LCMS)** : >98%  
**Conclusion** : The product has been tested and complies with the given specifications.

**Caution: Product has not been fully validated for medical applications. Lab Use Only!**

E-mail: tech@probechem.com